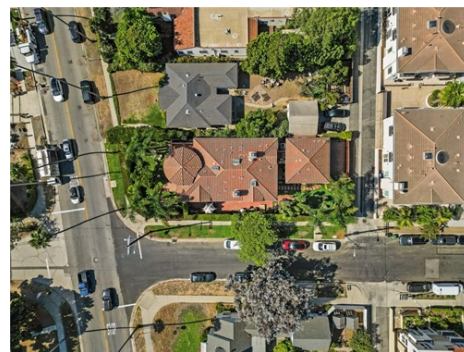


Heart of Brentwood! Custom Spanish Colonial! Tuscan Vibes!



\$ 17,500



978 S. Bundy Drive
- 12 month lease - \$17,500 per month!, Los Angeles, CA 90049

- » Deposit: 35000
- » Beds: 5 | Baths: 6 Full
- » Single Family | 5,038 ft² | Lot: 8,765 ft²
- » Over 5,000 Square Footage Living space! 5 En Suite Bedrooms & 6 Baths! Built 2008!
- » Attached guest unit with separate entrance! Fabulous chef's kitchen!
- » More Info: 978SBundyDrive.com



Billy Wynn
(818) 261-3400 (Mobile)
(818) 261-3400 (Text)
billywynn1@gmail.com
<https://billywynn.remax.com>

RE/MAX

RE/MAX ONE
6355 Topanga Canyon Blvd
#100
Woodland Hills, CA 91367
(818) 261-3400

Be in the heart of Brentwood North of Wilshire South of San Vicente - one of the most coveted pockets in the area. Showcase property, over 5,000 square feet, 2008 custom built Spanish Colonial w/Tuscan vibe - Features Five en-suite bedrooms, 6 total baths, den, office, formal dining. Living Room attached guest unit w/ separate entrance, massive kitchen with eat in breakfast area and giant center island with bar stools, bakers rack, ceiling mounted pot rack, hand painted cabinetry, dual ovens, dishwashers, bread warmers, utility room, 3 fireplaces, custom arched doors exposed wood beams hand painted decorative ceramic tiles, rod iron railings, gates and grill work. Warm rustic Tuscan color palette, two-story round tower turret entrance second story exposed library with sitting area, handcrafted windows solid carved mahogany doors and floors, mirrored wardrobes, soffit ceilings, designer moldings, imported sinks and hardware throughout, 10 foot ceilings in many rooms, skylights in several rooms, theater room, antique stained Multi zoned AC and heat with filtration system 9,000-foot corner lot. two car attached garage, EV charger, and parking for four cars behind security gates - complete privacy. Outdoor patios perfect for outdoor dining and entertaining - single hole putt and chip green and more!

